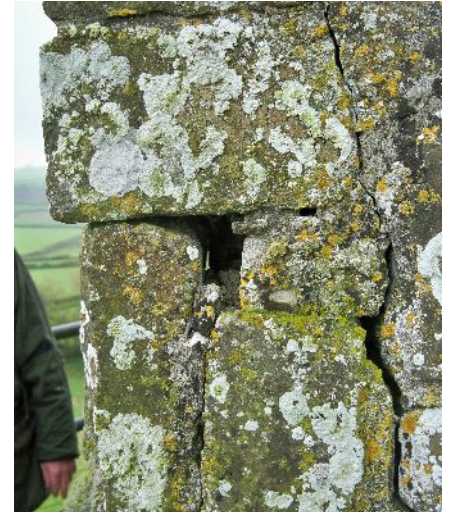
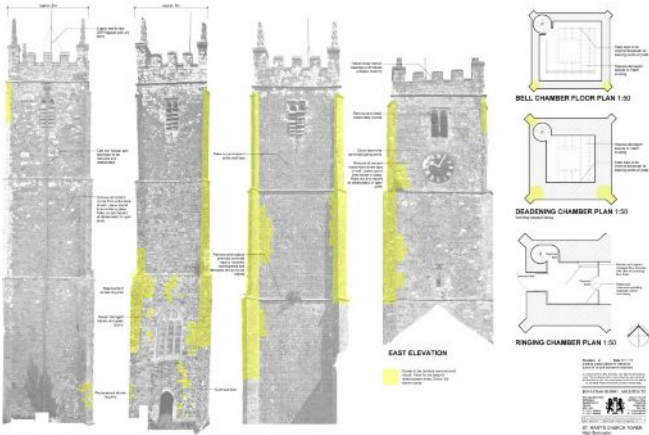


High Bickington Church



The church tower was initially scaffolded in 2010 to allow assessment of the buttresses, but was not eligible for English Heritage grant aid. The condition of the tower, with stones falling off the buttresses, deteriorated over the bad winters of 2012 and 2013..

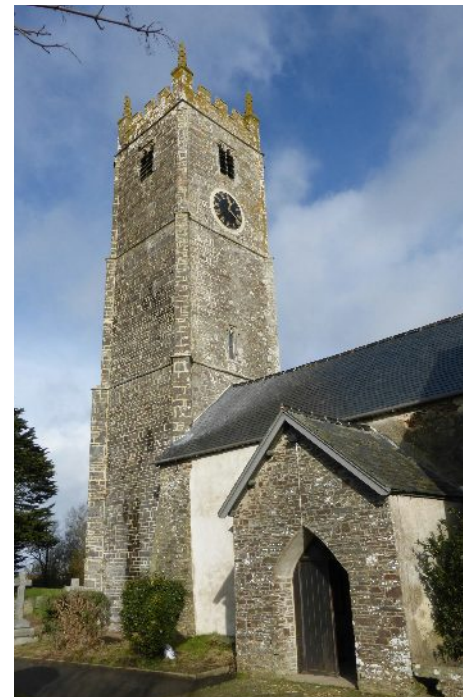


On close inspection it was found that the external facing stones were not properly bonded to the rubble core and the separation was worse on the exposed buttresses. Previous campaigns of repair from the 1950's onwards had used cement which had exacerbated the problem.

The repair approach, arrived at with Structural Engineer Paul Carpenter, was to put thin stainless steel ties within the stone bed joints around three sides of the tower and buttresses, and fix back into the core, rebuild the buttresses and repair or replace damaged stonework to the wall faces.



The work was carried out by skilled stonemasons, Carrek Ltd. of Wells from July 2014 and completed and scaffold removed in early 2015.



www.jonathan-rhind.co.uk

JONATHAN RHIND . ARCHITECTS