

# The Gildhouse, Poundstock, N. Cornwall



This 15th Century Gildhouse in North Cornwall was repaired and reordered during 2007 to enable its use as a Church Hall with the assistance of the Heritage Lottery Fund. The building is a typical, early north Cornish construction with cob upper walls, stone ground floor and timber framed cruck roof.



## Winner 2009 RIBA South West Conservation Award

### **The judges' comments:-**

"...in this subtle and sensitive renovation of the medieval Gildhouse was palpable. The architect's philosophy of 'just enough' shone through with imperceptible and crafted repair merging seamlessly with appropriate measured new work to accommodate disabled access and facilities."

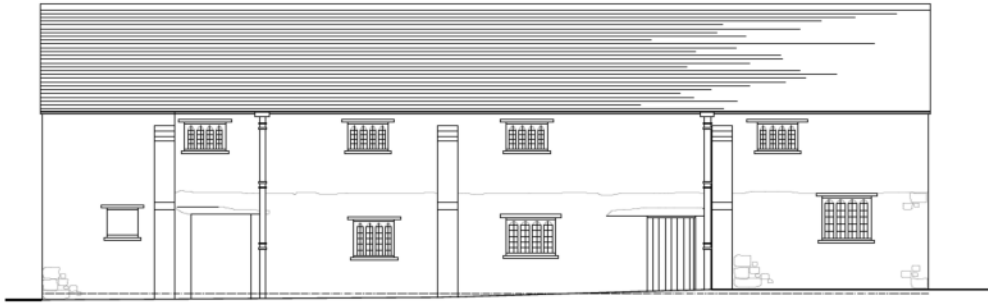
## Winner 2012 EU Prize for Cultural Heritage/Europa Nostra/ Grand Prix Award

### **The judges' comments: -**

"Among the many sophisticated and palatial projects we were invited to consider, the Jury were excited to discover this modest but meticulously restored example of the vernacular ... The Jury expressed unqualified admiration for the traditional techniques adopted in giving the cob walls, windows and timber-cruck roof a renewed lease of life."







*West Elevation*



*Surface repairs to cob held with oak pegs and deeper repairs to walls.*



*Interior*



*Window seat - repaired.*



*Scarfed timber repairs to windows.*



*Completed West Elevation.*